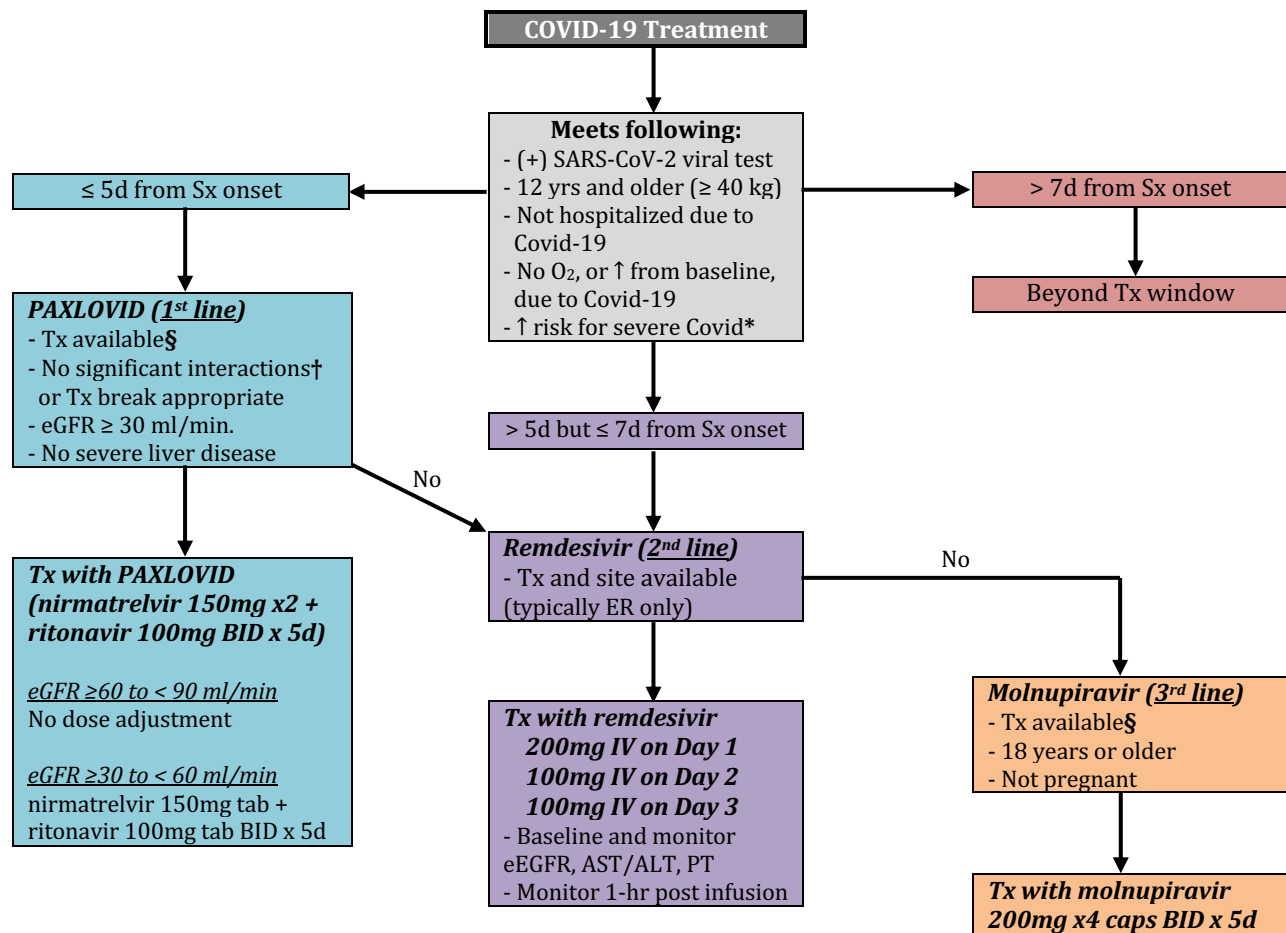


COVID-19 THERAPEUTICS FOR OUTPATIENTS

Simplified Algorithm for Licensed Providers, December 11, 2022

Call Bird's Eye Medical for questions or to talk to a provider: 360-688-7044



*Patients at High Risk of Severe Disease

- 65 years or older
- Cancer
- Cardiovascular disease
- Chronic kidney disease
- Chronic liver disease
- Chronic lung disease
- Cystic fibrosis
- Diabetes
- HIV infection
- Immunocompromised
- Neurodevelopmental disorders
- Overweight or obese (BMI > 25)
- Pregnancy
- Sickle cell disease
- Stroke or cerebrovascular disease
- More at: <https://www.cdc.gov/coronavirus/2019-ncov/hcp/clinical-care/underlyingconditions.html>

†PAXLOVID drug-drug interaction tool is available at: <https://www.covid19-druginteractions.org/checker>

§ Available treatments and locations can be found at: <https://covid-19-therapeutics-locator-dhhs.hub.arcgis.com/>

Bird's Eye Medical providers are available 7 days a week to assess/treat patients or answer questions from other providers through end of December, 2022.

Sources: <https://www.covid19treatmentguidelines.nih.gov/>, <https://www.fda.gov/media/154701/download>